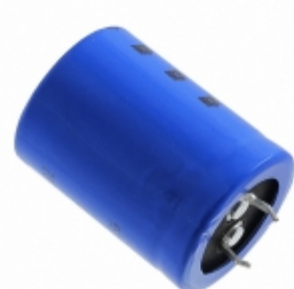


## MAL215868332E3



**Part Number:** [MAL215868332E3](#)  
**Manufacturer:** [Electro-Films \(EFI\) / Vishay](#)  
**Description:** CAP ALUM 3300UF 20% 63V SNAP  
**Data sheet:** [158 PUL-SI \(MAL2158\) Series](#)  
[Aluminum Electrolytic Capacitors Guide](#)

**RoHS Status:** Lead free / RoHS Compliant  
**Ship From:** Hong Kong  
**Shipment Way:** DHL/Fedex/TNT/UPS/EMS

Images are for reference only.  
 See Product Specifications for product details.  
 Buy **MAL215868332E3** with confidence from  
 Component-World.HK, 1 Year Warranty

[Request For Quotation](#)

### PRODUCT PARAMETER

<b>Part Number</b>	MAL215868332E3	<b>Manufacturer</b>	<a href="#">Electro-Films (EFI) / Vishay</a>
<b>Description</b>	CAP ALUM 3300UF 20% 63V SNAP	<b>Lead Free Status / RoHS Status</b>	Lead free / RoHS Compliant
<b>Quantity Available</b>	13800 pcs	<b>Data sheet</b>	<a href="#">158 PUL-SI (MAL2158) Series</a> <a href="#">Aluminum Electrolytic Capacitors</a>
<b>Category</b>	<a href="#">Capacitors</a>	<b>Voltage - Rated</b>	<a href="#">Guide</a> 63V
<b>Tolerance</b>	±20%	<b>Surface Mount Land Size</b>	-
<b>Size / Dimension</b>	0.984" Dia (25.00mm)	<b>Series</b>	158 PUL-SI
<b>Ripple Current @ Low Frequency</b>	3.76A @ 100Hz	<b>Ratings</b>	-
<b>Polarization</b>	Polar	<b>Packaging</b>	Bulk
<b>Package / Case</b>	Radial, Can - Snap-In - 3 Lead	<b>Other Names</b>	4810PHBK MAL215868332E3-ND
<b>Operating Temperature</b>	-40°C ~ 105°C	<b>Mounting Type</b>	Through Hole
<b>Moisture Sensitivity Level (MSL)</b>	1 (Unlimited)	<b>Manufacturer Standard Lead Time</b>	13 Weeks
<b>Lifetime @ Temp.</b>	5000 Hrs @ 105°C	<b>Lead Spacing</b>	0.394" (10.00mm)
<b>Lead Free Status / RoHS Status</b>	Lead free / RoHS Compliant	<b>Impedance</b>	45 mOhms
<b>Height - Seated (Max)</b>	1.654" (42.00mm)	<b>ESR (Equivalent Series Resistance)</b>	59 mOhm @ 100Hz
<b>Detailed Description</b>	3300µF 63V Aluminum Electrolytic Capacitors Radial, Can - Snap-In - 3 Lead 59 mOhm @ 100Hz 5000 Hrs @ 105°C	<b>Capacitance</b>	3300µF
<b>Applications</b>	General Purpose		

Component-World.com is a Reliable Stocking Distributor of Electronic Components. We specialize in all Electro-Films (EFI) / Vishay series electronic components. We have 13800 pieces of Electro-Films (EFI) / Vishay MAL215868332E3 in stock available now. Request a quote from electronics components distributor at Component-World.com, our sales team will contact you within 24 hours.  
 RFQ Email: [info@Components-World.com](mailto:info@Components-World.com)

### RELATED PRODUCTS

	<b>Part#:</b> <a href="#">MAL215875153E3</a> <b>Description:</b> CAP ALUM 15000UF 20% 16V SNAP	<b>Manufacturers:</b> <a href="#">Electro-Films (EFI) / Vishay</a>	<a href="#">RFQ</a>
	<b>Part#:</b> <a href="#">MAL215867392E3</a> <b>Description:</b> CAP ALUM 3900UF 20% 40V SNAP	<b>Manufacturers:</b> <a href="#">Electro-Films (EFI) / Vishay</a>	<a href="#">RFQ</a>
	<b>Part#:</b> <a href="#">MAL215871562E3</a> <b>Description:</b> CAP ALUM 5600UF 20% 50V SNAP	<b>Manufacturers:</b> <a href="#">Electro-Films (EFI) / Vishay</a>	<a href="#">RFQ</a>
	<b>Part#:</b> <a href="#">MAL215869102E3</a> <b>Description:</b> CAP ALUM 1000UF 20% 100V SNAP	<b>Manufacturers:</b> <a href="#">Electro-Films (EFI) / Vishay</a>	<a href="#">RFQ</a>
	<b>Part#:</b> <a href="#">MAL215868222E3</a> <b>Description:</b> CAP ALUM 2200UF 20% 63V SNAP	<b>Manufacturers:</b> <a href="#">Electro-Films (EFI) / Vishay</a>	<a href="#">RFQ</a>
	<b>Part#:</b> <a href="#">MAL215869152E3</a> <b>Description:</b> CAP ALUM 1500UF 20% 100V SNAP	<b>Manufacturers:</b> <a href="#">Electro-Films (EFI) / Vishay</a>	<a href="#">RFQ</a>
	<b>Part#:</b> <a href="#">MAL215867822E3</a> <b>Description:</b> CAP ALUM 8200UF 20% 40V SNAP	<b>Manufacturers:</b> <a href="#">Electro-Films (EFI) / Vishay</a>	<a href="#">RFQ</a>
	<b>Part#:</b> <a href="#">MAL215866682E3</a> <b>Description:</b> CAP ALUM 6800UF 20% 25V SNAP	<b>Manufacturers:</b> <a href="#">Electro-Films (EFI) / Vishay</a>	<a href="#">RFQ</a>
	<b>Part#:</b> <a href="#">MAL215867562E3</a> <b>Description:</b> CAP ALUM 5600UF 20% 40V SNAP	<b>Manufacturers:</b> <a href="#">Electro-Films (EFI) / Vishay</a>	<a href="#">RFQ</a>
	<b>Part#:</b> <a href="#">MAL215871682E3</a> <b>Description:</b> CAP ALUM 6800UF 20% 50V SNAP	<b>Manufacturers:</b> <a href="#">Electro-Films (EFI) / Vishay</a>	<a href="#">RFQ</a>
	<b>Part#:</b> <a href="#">MAL215872392E3</a> <b>Description:</b> CAP ALUM 3900UF 20% 80V SNAP	<b>Manufacturers:</b> <a href="#">Electro-Films (EFI) / Vishay</a>	<a href="#">RFQ</a>
	<b>Part#:</b> <a href="#">MAL215872272E3</a> <b>Description:</b> CAP ALUM 2700UF 20% 80V SNAP	<b>Manufacturers:</b> <a href="#">Electro-Films (EFI) / Vishay</a>	<a href="#">RFQ</a>
	<b>Part#:</b> <a href="#">MAL215865123E3</a> <b>Description:</b> CAP ALUM 12000UF 20% 16V SNAP	<b>Manufacturers:</b> <a href="#">Electro-Films (EFI) / Vishay</a>	<a href="#">RFQ</a>
	<b>Part#:</b> <a href="#">MAL215866822E3</a> <b>Description:</b> CAP ALUM 8200UF 20% 25V SNAP	<b>Manufacturers:</b> <a href="#">Electro-Films (EFI) / Vishay</a>	<a href="#">RFQ</a>
	<b>Part#:</b> <a href="#">MAL215868272E3</a> <b>Description:</b> CAP ALUM 2700UF 20% 63V SNAP	<b>Manufacturers:</b> <a href="#">Electro-Films (EFI) / Vishay</a>	<a href="#">RFQ</a>
	<b>Part#:</b> <a href="#">MAL215869122E3</a> <b>Description:</b> CAP ALUM 1200UF 20% 100V SNAP	<b>Manufacturers:</b> <a href="#">Electro-Films (EFI) / Vishay</a>	<a href="#">RFQ</a>
	<b>Part#:</b> <a href="#">MAL215871472E3</a> <b>Description:</b> CAP ALUM 4700UF 20% 50V SNAP	<b>Manufacturers:</b> <a href="#">Electro-Films (EFI) / Vishay</a>	<a href="#">RFQ</a>
	<b>Part#:</b> <a href="#">MAL215872222E3</a> <b>Description:</b> CAP ALUM 2200UF 20% 80V SNAP	<b>Manufacturers:</b> <a href="#">Electro-Films (EFI) / Vishay</a>	<a href="#">RFQ</a>
	<b>Part#:</b> <a href="#">MAL215865153E3</a> <b>Description:</b> CAP ALUM 15000UF 20% 16V SNAP	<b>Manufacturers:</b> <a href="#">Electro-Films (EFI) / Vishay</a>	<a href="#">RFQ</a>
	<b>Part#:</b> <a href="#">MAL215866103E3</a> <b>Description:</b> CAP ALUM 10000UF 20% 25V SNAP	<b>Manufacturers:</b> <a href="#">Electro-Films (EFI) / Vishay</a>	<a href="#">RFQ</a>

### Related keywords for MAL215868332E3

<a href="#">Electro-Films (EFI) / Vishay MAL215868332E3</a>	<a href="#">MAL215868332E3 distributor</a>	<a href="#">MAL215868332E3 supplier</a>	<a href="#">MAL215868332E3 price</a>
<a href="#">MAL215868332E3 download datasheet</a>	<a href="#">MAL215868332E3 datasheet</a>	<a href="#">MAL215868332E3 stock</a>	<a href="#">buy MAL215868332E3</a>
<a href="#">Electro-Films (EFI) / Vishay MAL215868332E3</a>	<a href="#">Electro-Films (EFI) / Vishay MAL215868332E3</a>	<a href="#">Vishay Electro-Films MAL215868332E3</a>	<a href="#">Phoenix Passive Components / Vishay</a> <a href="#">MAL215868332E3</a>